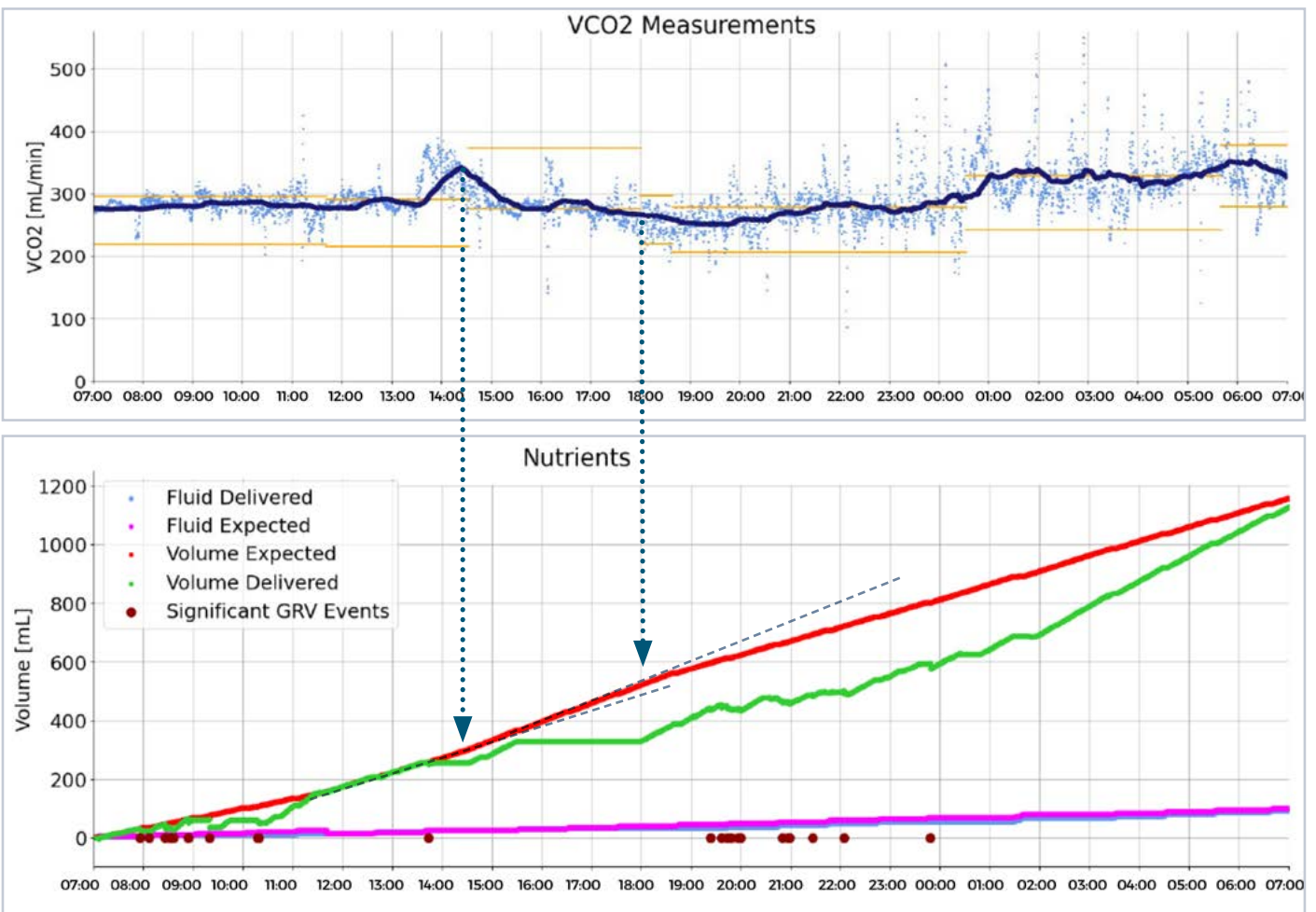




# Daily Reports Enable Informed Decision-Making

## Achieving optimal patient nutrition with up to 100% feeding efficiency

The large gap between the patient’s nutritional needs, prescription and nutritional administration results in inadequate medical nutrient therapy. smART+™ closes the nutritional gap, enables maximizing efficacy of nutritional interventions, while minimizing nutrition related complications.



The table below details the basal rate and compensation rate for the plans shown in the graph above.

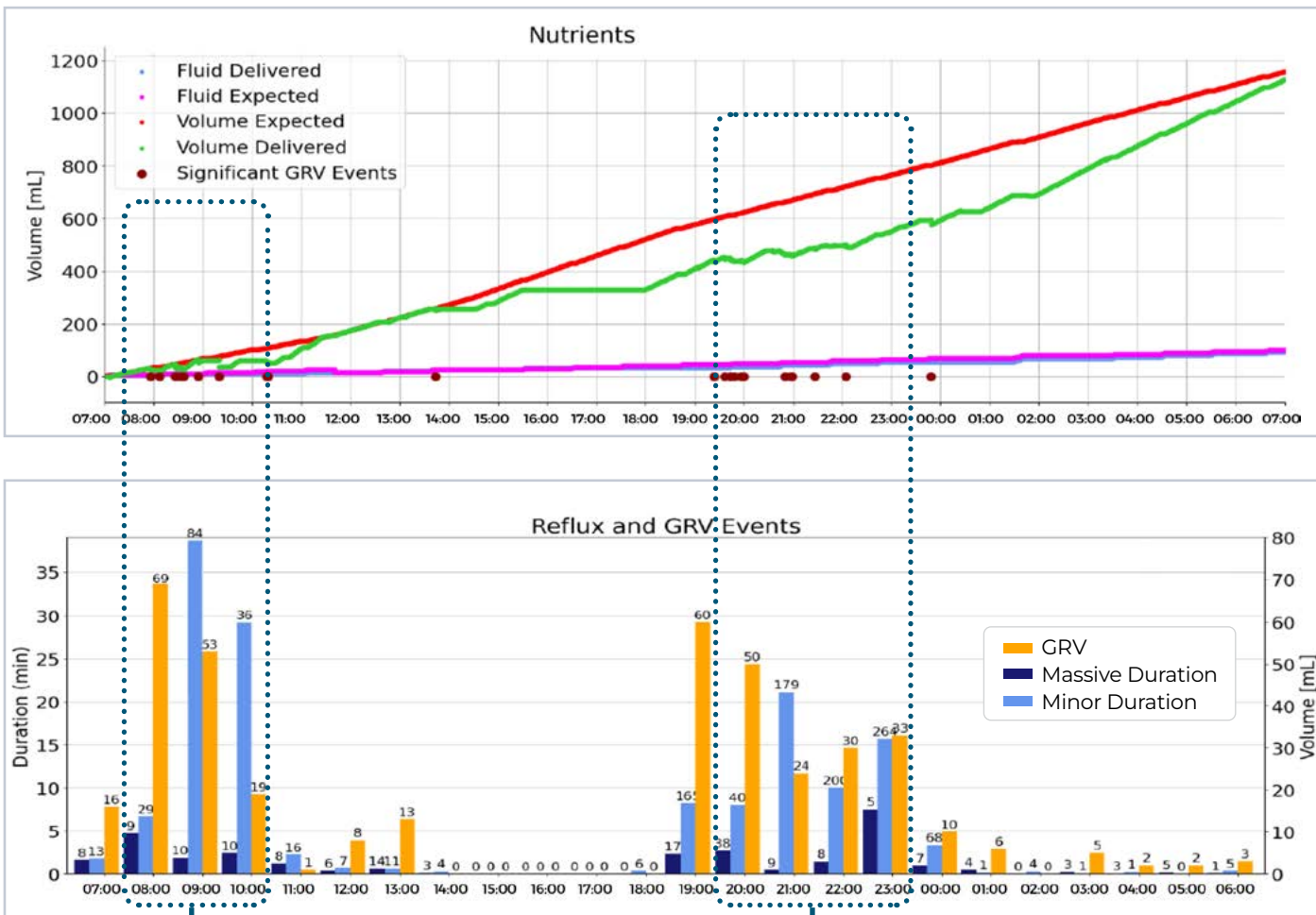
Plan Start	Plan End	Duration	Plan	VTBD	Basal Rate	Max Rate	REE	Plan Percentage	Food Rype
May-26 07:00:01	May-26 11:40:44	4:40:44	Update	941.0 mL	34.0 mL/h	120.0 mL/h	2103.0 kcal/day	70.0%	Peptamen AF 1.5
May-26 11:40:45	May-26 11:40:53	0:00:08	New	1159.0 mL	49.0 mL/h	120.0 mL/h	2073.0 kcal/day	85.0%	Peptamen AF 1.5
May-26 11:40:54	May-26 14:32:29	2:51:36	Update	1159.0 mL	49.0 mL/h	80.0 mL/h	2073.0 kcal/day	85.0%	Peptamen AF 1.5
May-26 14:32:30	May-26 17:59:43	3:27:13	Update	1333.0 mL	63.0 mL/h	80.0 mL/h	2653.0 kcal/day	85.0%	Peptamen AF 1.5

## Real-Time Reflux Data & Correlation with Residual Evacuation

The smART+™ Platform assists in preventing VAP/VAE through automatic GRV evacuation, reducing aspiration and other serious complications.

Reflux & GRV events cause feeding interruptions.

The smART+™ platform compensates and assists in reaching up to 100% feeding efficiency.



Correlation between reflux events and residual evacuation.

Reflux Events	Balloon	Massive	Minor	Total
Duration	0:15:15	0:29:18	2:27:50	2:57:08
Count	86	168	1134	1302
Average		0:00:10	0:00:07	0:00:08

Total amount of GRV	Total reflux duration
404 mL	2:57:08

smART+™ provides real-time data and insight on patient condition, thus assisting in making more informed, data based medical decisions.

